



Published on JCK (<http://www.jckonline.com>)

Draw Inspiration for Fall 2015 With These Pantone-Pretty Jewels

February 25, 2015

You know those seasons, when Pantone releases its anticipated color report, and you're not really into the new palette? Well, this is so *not* one of those years. The Fall 2015 Color Report from Pantone is miraculous, with colors worth bathing in for days. Dried Herb, Stormy Weather, Biscay Bay: I can see them hanging in my closet now—not to mention my jewel box. And you're gonna love how some of your favorite gemstones portray this group of colors. Have a look—some of my favorite picks to represent the colors of 2015. Is it bad if I'm wishing for it to be fall already?



Ian Saucill for Kaiser Gems

DRIED HERB

PANTONE 17-0627

An olive green shade once thought of as strictly safari or military, **Dried Herb** has been elevated into a color we now perceive as sophisticated and chic.



Danhier

DESERT SAGE

PANTONE 16-0110

A cool and soothing greenish gray, **Desert Sage** is the ideal neutral.





Bahina



STORMY WEATHER

PANTONE 18-4214

Implying quality and luxury, **Stormy Weather** is a powerful blue-gray shade that is strong, protective, and enduring.

ELLE Time & Jewelry

OAK BUFF

PANTONE 16-1144

Just as the sun comes out after stormy weather to bring us cheer and a glimmer of hope, **Oak Buff** is a mellow, comforting, and warming shade that brings good feelings.



Yoko London



Sylvie Collection

Supreme Jewels

MARSALA

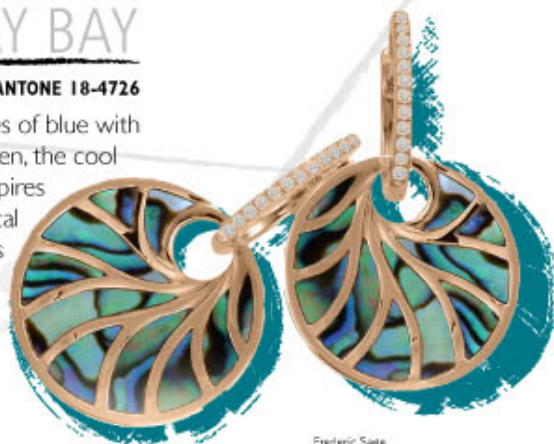
PANTONE 18-1438

Rich and robust, **Marsala** incorporates the warmth and richness of a tastefully fulfilling meal, while its grounding red-brown roots point to a sophisticated, natural earthiness.

BISCAY BAY

PANTONE 18-4726

Combining the serene qualities of blue with the invigorating aspects of green, the cool and confident **Biscay Bay** inspires thoughts of soothing, tropical waters, taking us to a place that is pleasant and inviting.



Frederic Sage



REFLECTING POND



PANTONE 19-4326

Conveying a message of credibility, **Reflecting Pond** is a serious shade that speaks to our need for stability and security.



CADMIUM ORANGE

PANTONE 15-1340

A nod to the '60s and '70s, **Cadmium Orange** evokes a sentiment of optimism, fun, and fantasy.



CASHMERE ROSE

PANTONE 16-2215

Cultivated in richness, **Cashmere Rose** is a gentle and composed pink that is more upscale than downtown.



AMETHYST ORCHID

PANTONE 17-3628

Intriguing, vibrant, and somewhat sensual, the enigmatic **Amethyst Orchid** is an extraordinary hue that is unique, bold, creative, and exciting.





Lainie, L'ampère



*All quotes attributed to Leatrice Eiseman, executive director, Pantone Color Institute

Réalisé avec

EN SAVOIR PLUS

Source URL: <http://www.jckonline.com/blogs/on-your-market/2015/02/25/draw-inspiration-fall-2015-these-pantone-pretty-jewels>